

California
Shutters



Stylish security for
every home



If it's not Crimsafe, it's not crim safe.

Inside

Why choose Crimsafe	3
Doors	4
Crimsafe iQ™	6
Windows and emergency exits	8
Outdoor areas	9
Apartments	10
Garages and storage	12
Bushfire and cyclone protection	13
Features and benefits	14
Product details	16
Testing	18

Front cover and inside front cover:

Advaita Way House, an award winning architecturally designed home.

The architect chose Crimsafe specifically for its energy efficiency properties, and also the clear unhindered views that enabled the home to blend seamlessly with the natural landscape.



Why choose Crimsafe?

At Crimsafe, we believe that when it comes to the safety of you and your family, there should be no compromise.

Crimsafe is the strongest security screen on the market, providing you with safety and security for your home, plus so many other benefits.

With a flexible range of products and styles, there is a Crimsafe option to suit every home.

Product range

- doors
- windows
- emergency exits
- patio and outdoor enclosures
- pool fencing
- garage and storage areas
- cyclone debris protection
- bushfire protection

Features and benefits

- strong security
- fresh air and breezes
- energy efficiency
- unhindered views
- fall protection from heights
- insect protection
- storm and cyclone protection
- fire protection
- extended warranty up to 15 years

Doors

Crimsafe has a wide range of door options to suit every home décor and every size and style of opening.

Hinged doors

Crimsafe hinged screen doors secure the main entry points of your home, keeping your family safe inside – and keeping unwanted visitors out.

Crimsafe allows light and air to flow naturally through your home, while still giving you comfort that you have a strong barrier between you and any uninvited guests that may knock on your door.

Sliding doors

Crimsafe's single, double or triple sliding security screens can secure small or large openings.

With no need for bars and grilles, Crimsafe sliding doors increasing airflow, protect your views and create a sense of open space in your home.



Securing the main entry door of your home allows you to enjoy natural light and airflow, without compromising your family's safety



Stacking doors can secure even the widest openings, creating a feeling of light and space between indoor and outdoor living areas.

French doors

French doors look beautiful, but they can be an easy access point for criminals. Crimsafe's double French door security screens have been designed to secure your doors, without detracting from their visual appeal.

Bi-fold and stacking doors

Bi-fold and stacking doors are ideal for very large openings, such as onto a large balcony, patio or courtyard.

Bi-fold doors have hinged panels that open up concertina-style, folding back on themselves neatly.

Stacking doors have sliding panels that stack in front of each other.



Bi-fold doors are hinged and can fold back to completely open up a living space.

Crimsafe iQ™

The strongest stainless steel security door in Australia

The Crimsafe iQ™ range takes security to the next level. With the patented technology and smooth profile of Crimsafe Ultimate as its foundation, Crimsafe iQ™ adds anti-jimmy heavy duty hinges and a wider, stronger, patented frame, making it highly resistant to attack.

The addition of technology and smart features provides maximum security, convenience and flexibility. The iQ™ range is the first Crimsafe product to incorporate smart technology, giving you the flexibility to choose between a mechanical or electronic option.



Mechanical or electronic series

The Crimsafe iQ™ door lets you choose between the iQ-m series, with a mechanical key lock, and the iQ-e series, with electronic access options.

The iQ-m features a five-point locking system and a manual key lock. It is incredibly strong and resistant to attack.

The iQ-e has a three-point locking system and the convenience of keypad, Bluetooth, keyfob or fingerscan access. The iQ-e series is wired into a power source, and also has an override manual key lock in the event of a power failure.

Left: The Crimsafe iQ-e series features electronic access options including keypad functionality (as shown), or Bluetooth, keyfob or fingerscan options.



The Crimsafe iQ™ range comes with a standard 10-year warranty on all screens with the option to extend warranty up to 15 years. Hardware and accessories are covered by the warranty conditions of the manufacturer. For complete terms and conditions go to www.crimsafe.com.au/warranty



Heavy duty hinges provide great strength and resistance to jemmy attack.

Product features

Crimsafe iQ™ combines all the design benefits of Crimsafe Ultimate with cutting-edge security hardware technology.

- electronic or mechanical multi-point locking system
- European designed hardware
- anti-jemmy heavy duty hinges
- day/ night programming can specify whether the door should lock automatically on closing (iQ-e series)
- emergency release from inside (iQ-e series)
- thicker and wider frame with patented anti-jemmy features
- multiple access options including a choice of manual key lock, PIN code keypad, Bluetooth or fingerscan
- access to programming features via mobile app
- individually programmable PIN codes
- patented U-groove profile design to withstand jemmy attack
- patented Crimsafe Ultimate framing system with unique Screw-Clamp™ technology and clip-on protective cover

Super convenient

With flexible access options and programmable features, Crimsafe iQ™ combines maximum convenience with maximum security.

Perfect for:

- homes
- businesses
- multi-residential complexes
- office buildings
- hospitals and other health facilities
- retail outlets
- banks
- secure storage areas
- facilities and equipment rooms
- garages

Windows and emergency exits

Crimsafe has a flexible range of installation methods to suit any size or type of window, including fixed, hinged, casement-style, sliding windows or louvres.

Fixed window screens

Crimsafe fixed panel windows are non-moving panels and are often the best option for securing louvres or sash windows, provided these windows do not form part of an emergency exit procedure.

Hinged window screens

Crimsafe hinged window screens are hinged along their sides or top to swing outward or inward.

Hinged windows are ideal for single and multi-panel sliding windows, double hung windows, single and multiple hoppers, casement windows, louvres, and fixed and sliding combinations.

Sliding window screens

Crimsafe sliding window security screens can be single, double or triple sliding.

They can be installed on the inside or outside of sliding windows, or the inside of casement windows.

Emergency exits

Crimsafe has designed Safe-S-Capes®, a keyless one-touch emergency exit system that secures your windows against intruders, but still allows you to get out quickly and easily if you need to.

Safe-S-Capes® can be hinged or sliding.



Securing windows lets you enjoy a breeze and a feeling of safety, protecting you from intruders and insects



Crimsafe's one-touch release Safe-S-Capes® can open inward or outward to suit your home, letting you get out quickly in the event of an emergency

Outdoor areas

Australians love spending time outdoors and for many of us, an outdoor entertaining area is a must.



Crimsafe screens create a stunning option for outdoor pool enclosures, providing protection from UV rays while maintaining fresh air and spectacular views.

Pool fencing

Crimsafe can be used around pool areas as an alternative to traditional pool fencing.

Providing clear views through the mesh, Crimsafe creates a feeling of open space while still maintaining a strong, secure barrier to comply with pool safety requirements.

Patio enclosures

Crimsafe reduces solar heat by up to 53% and filters up to 62% UV rays, making outdoor areas more comfortable in summer.

Crimsafe screens can reach from floor to ceiling and can be curved or bent to form roofs and corners to completely enclose your space - meaning all doors and windows overlooking the area are protected and secure.



Crimsafe floor-to-ceiling screens provide a wide range of lifestyle benefits, including security, insect protection, air flow and unhindered views

Apartments

Burglars target high occupancy areas, and apartment buildings are no exception.

People living in apartment buildings often don't know all of their neighbours, making it easy for strangers to be in the building without raising suspicion. Even units above ground level can be broken into.

Crimsafe applications for apartments include:

- main entry doors
- balcony doors
- windows
- emergency exit windows
- storage areas
- courtyard enclosures
- garage security
- pool fencing
- rooftop enclosures

Protecting children from falls

Some states of Australia have introduced laws regarding window protection devices in strata title properties.

The laws state that any window above two metres from the ground must be fitted with a safety device, to prevent children from falling.

Crimsafe meets building construction requirements for child protection of openable windows, and still allows the window to be opened completely for fresh air and natural light.

Strata Title laws in your state will confirm if these regulations apply to your property.



Crimsafe proudly partners with Kids Don't Fly, a NSW Government Initiative.



Crimsafe sliding doors protect bedrooms and living areas leading onto the balcony, allowing natural light and fresh breezes to flow through the apartment.

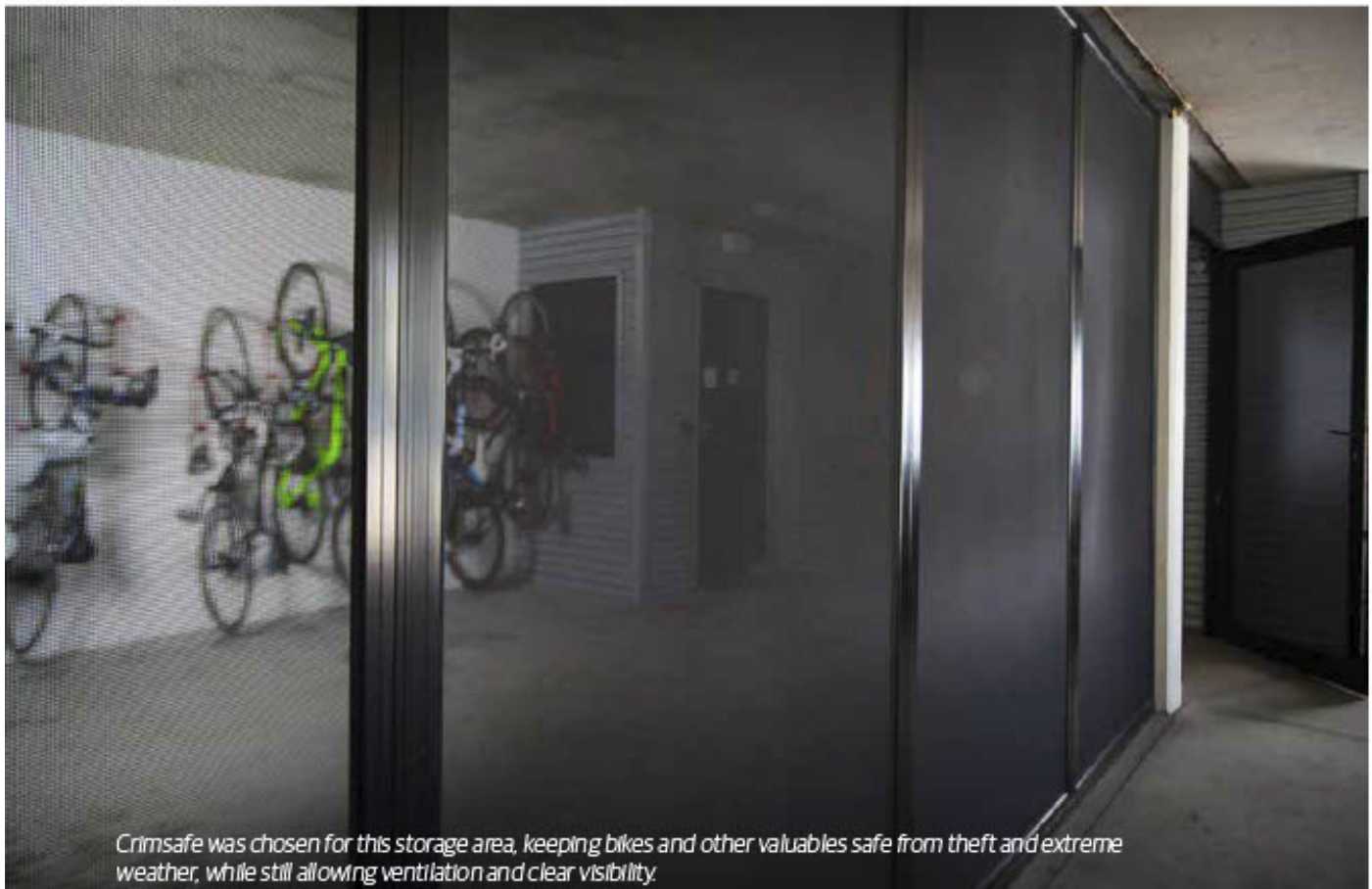


Garages and storage areas

Garages and storage areas can be targets for thieves, as they are often full of valuables but can be left unattended for periods of time.

Protecting garages and storage areas with Crimsafe:

- protects your possessions from theft
- protects against hail and storm debris
- allows airflow to prevent mould and mildew
- provides visibility through the mesh so intruders are more likely to be detected.



Crimsafe was chosen for this storage area, keeping bikes and other valuables safe from theft and extreme weather, while still allowing ventilation and clear visibility.

Bushfire and cyclone protection

Australia experiences a wide range of harsh weather conditions. Storms, cyclones and bushfires are regular occurrences that can wreak havoc on homes and businesses.

Crimsafe has developed specialty products to provide bushfire and cyclone protection.

Bushfire protection

Crimsafe has tested its security screens to meet the highest levels in bushfire protection, and can be used in bushfire prone areas up to and including those rated BAL-FZ.

Crimsafe's Tensile-Tuff® stainless steel mesh is specially designed to a size and shape (1.5mm x 1.5mm aperture) that meets the requirements of the Australian Standard AS 3959-2009 bushfire protection guidelines.

Cyclone debris protection

Crimsafe Cyclone Debris screens can protect your home or business against storm driven debris from wind gusts up to 392kph.

They pass the highest levels for Cyclone Debris Screening required for regions C & D, withstanding impact up to 44 m/s. Our specially designed Crimsafe Cyclone Debris Screens feature a unique 'build-out' installation to protect glass windows from wind-borne debris.



Features and benefits

Crimsafe provides exceptionally strong security, and so much more, including the ability to enjoy through-breezes and unhindered views, as well as protection from heat and UV rays.

Crimsafe's strength also provides an effective barrier to prevent falls from windows or balconies, and protects your home from hail and wind-borne debris during storms.

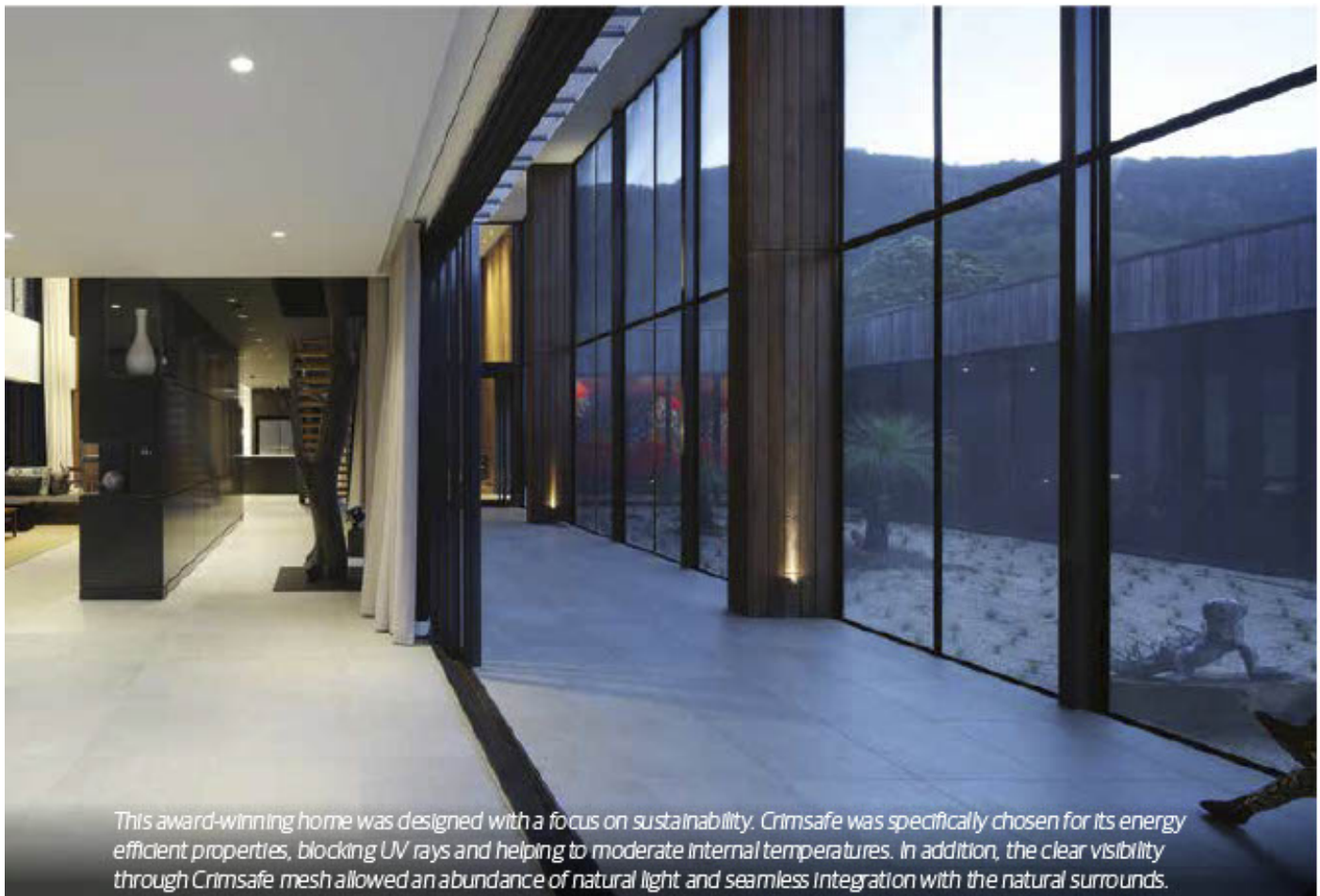
Strong security

Crimsafe's industry leading technology makes it the strongest stainless steel security screen system on the market, proven by independent testing..

Read more about Crimsafe's strength and comparative test results on page 18.

Fresh air and breezes

One of the greatest benefits of Crimsafe is the ability to enjoy a breeze and fresh air, without compromising your security.



This award-winning home was designed with a focus on sustainability. Crimsafe was specifically chosen for its energy efficient properties, blocking UV rays and helping to moderate internal temperatures. In addition, the clear visibility through Crimsafe mesh allowed an abundance of natural light and seamless integration with the natural surrounds.

Energy efficiency

The greatest heat gain, or loss in a home occurs through glass windows and doors. Crimsafe:

- blocks up to 53% of solar heat gain
- blocks 62% of UV rays
- limits heat escaping during cold weather.

By helping to moderate the temperature inside your home, Crimsafe helps you enjoy fresh air and save on air conditioning bills.

Fall protection from heights

Each year, more than 50 children fall from windows or balconies in Australia. Tragically, many children suffer serious injury and some falls are fatal.

Crimsafe provides a strong and durable barrier to prevent falls, while still permitting you to confidently open your windows and balcony doors to enjoy a breeze.



Crimsafe's strength provides a barrier to prevent falls from windows and balconies

Unhindered views

Crimsafe's strength comes from the unique combination of Tensile-Tuff® mesh and our Screw-Clamp™ fastening system – which means there is no need for bars and grilles.

The clean lines of powdercoated mesh provide unrestricted views and retain a feeling of open spaces.

Insect protection

Fly screens are designed to keep out insects, but they certainly won't stop an intruder. Crimsafe does both – keeping out all intruders, even the smallest ones!

Hail protection

Crimsafe screens act as a strong barrier against hailstones and wind-borne debris during a storm, helping to protect glass windows and doors from breaking.

Fire protection

Crimsafe screens block 59% of radiant heat, and can slow down the spread of fire from one floor to another, or to neighbouring buildings.

Crimsafe has also engineered specially designed bushfire protection screens, suitable for high-risk areas rated up to BAL-FZ. Read more about bushfire protection on page 13.

Extended warranty up to 15 years

Crimsafe provides a standard 10 year warranty on all of our screens, plus extended warranty up to 12 years on Crimsafe Regular, and up to 15 years on Crimsafe Ultimate.



Product details

Crimsafe is custom-made to measure and has a flexible range of installation options to suit every type of door and window opening:

- hinged and sliding doors
- french doors
- bi-fold doors
- stacking doors
- hinged and sliding windows
- emergency exit windows (Safe-S-Capes®)
- balcony balustrading
- patio and outdoor enclosures
- secure enclosures (e.g. storage areas)



Hinged and French doors can open inward or outward, to suit the style of your home.



Sliding doors can have single, double or triple panels.



Stacking doors can open to the right or left, and each panel neatly stacks behind the other.



Bi-fold doors are hinged to fold neatly to one side in a concertina style.



Hinged windows can open inward or outward.



Sliding windows can have single, double or triple panels.

Emergency exits

Both hinged and sliding windows can be fitted with the one-touch release Safe-S-Cape® emergency exit system.

Colour range

Crimsafe products come in a wide range of standard colours, with custom colours available on request. They are also available in woodgrain and anodised finishes so whatever your design preference, we have the products to enhance your home's décor.

Colours are an indication only, as they may appear slightly different on paper or on screen to the actual powder coated colours.

Marble Black Satin

Anodic Natural Matt

Apo Grey Satin

Classic Pearl White Gloss

Deep Ocean Satin

Dune Satin

Monument Matt

Paperbark Satin

Primrose Gloss

Surfmist Satin

Ultra Silver Gloss

White Birch Gloss

Woodland Grey Satin

What is the difference between Crimsafe Ultimate and Regular?

We have two product ranges – Crimsafe Ultimate and Crimsafe Regular.

Crimsafe Regular is our original range and has set the standard in security screen strength and design. It continues to be the baseline for Crimsafe's commitment to exceptional quality and durability.

Crimsafe Ultimate takes our products to the next level of security, strength and style.

Crimsafe Ultimate uses more screws in the fastening system, making it 40% stronger* than the Regular product. In addition, Ultimate features a clip-on cover that creates a smooth, architecturally designed look.



Crimsafe Ultimate

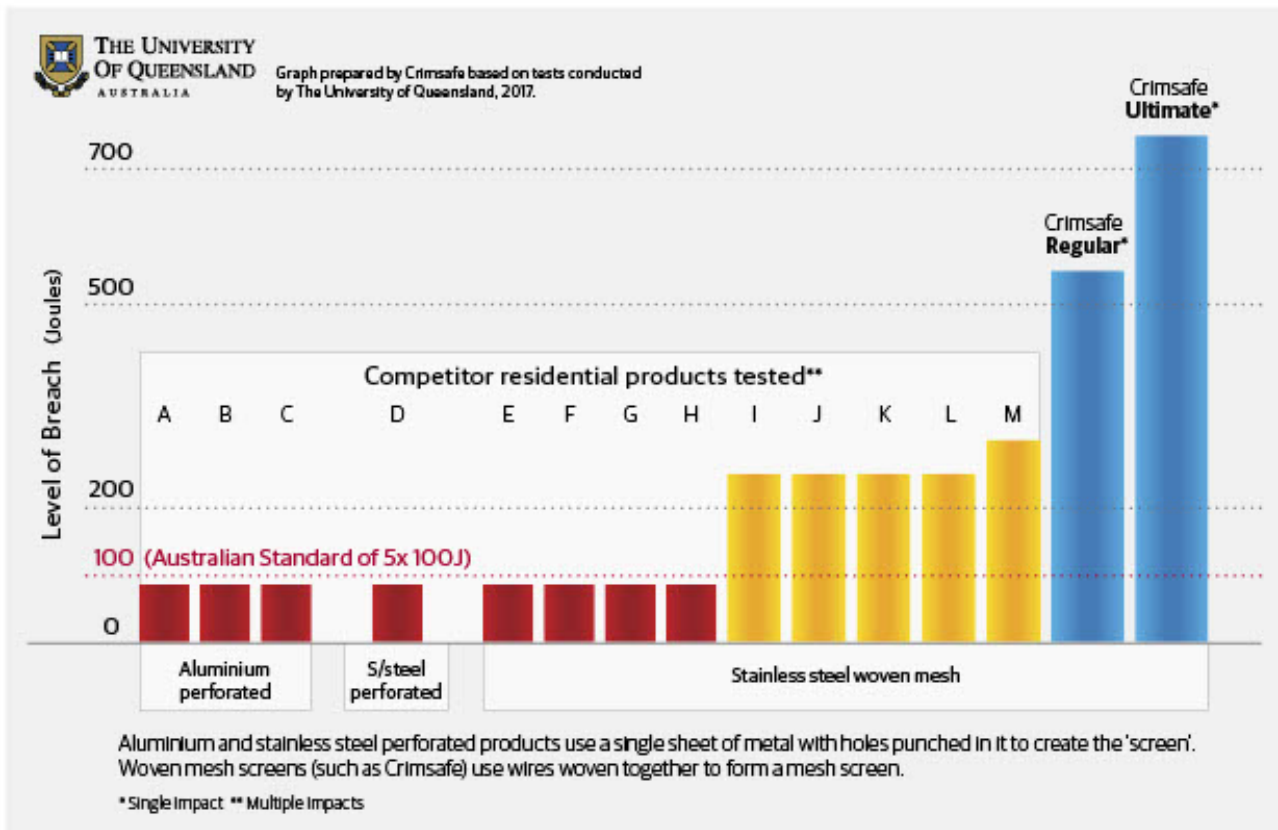


Crimsafe Regular

*Based on independent testing by the University of Queensland.

Testing

Independent university testing found that Crimsafe significantly outperformed competitor screens and the levels required by Australian Standards.



Standards and performance levels explained

Q: What is the Australian Standard?

A: Australian Standards for the security screen industry test the force of impact that a security screen can withstand, measured in 'Joules' - a unit of energy. To meet the standard, a security screen must withstand five single impacts of 100 Joules.

Q: What does 100 Joules mean in a real-life example?

A: 100 Joules of energy is roughly equivalent to the impact of a young child running into a glass door.

Q: Do all security screens pass the Australian Standard?

A: No. The University of Queensland study found that some screens failed the minimum standard required.

Q: Is the Australian Standard adequate?

A: Crimsafe doesn't think so. The average adult male weighing 86kg can easily exert more than 100 Joules of force in a single impact. That's why Crimsafe is engineered to be much stronger than the minimum standard, and clearly stronger than competitor products on the market.

Crimsafe continually invests in research and development, improving our product and technology.

Numerous independent tests have verified that Crimsafe products exceed the highest industry standards and outperform when tested against competitor products.



Security against break-in

Crimsafe passes or exceeds all Australian Standard tests (AS 5039-2008)

- ✓ Dynamic impact test
- ✓ Jemmy test
- ✓ Knife shear test
- ✓ Shear test
- ✓ Pull test
- ✓ Probe test



Energy efficient

Crimsafe improves the energy rating of glass windows and doors, improving energy efficiency:

- ✓ Solar heat gain reduction up to 53%
- ✓ Filters up to 62% of UV rays
- ✓ WERS rated up to 4.5 stars cooling
- ✓ WERS rated up to 3 stars heating



Fall prevention

Crimsafe provides a strong barrier to prevent falls from windows or balconies:

- ✓ Meets building construction requirements for child protection of openable windows
- ✓ Exceeds requirements of balustrade infill panels (AS/NZS 1170-2002)



Corrosion resistance

Crimsafe withstands the equivalent of 30 years environmental exposure:

- ✓ 3,000 hours Prohesion Accelerated Test (ATSM G85)



Insect protection

Crimsafe mesh has a 1.5mm aperture:

- ✓ Prevents 99% of mosquitos passing through



Storm and cyclone protection

- ✓ Helps block hailstones and wind-borne debris
- ✓ Specially designed cyclone debris screens available (rated up to 44 m/s)



Fire protection

- ✓ Blocks 59% radiant heat (fire attenuation screens)
- ✓ Helps block floating embers and burning debris
- ✓ Suitable for bushfire prone areas (rated to BAL-FZ)

California
Shutters



If it's not Crimsafe, it's not crim safe

More than 20 years ago, a start-up Australian company called Crimsafe revolutionised the security screen industry.

Today, Crimsafe is still setting the standard with our commitment to research, product development and technology.

Crimsafe has many imitators who claim to have an equivalent product, but there is no 'Crimsafe equivalent'.

We regularly conduct independent testing that proves Crimsafe outperforms industry standards and other products.

That's why if it's not Crimsafe, it's not crim safe.

Crimsafe is proudly Australian with an extensive network of Authorised Licensees all over the country and overseas. Visit the Crimsafe website to find a Licensee near you.



Crimsafe proudly partners with:



Kids Don't Fly



ASSOA
ACCREDITED



NSA
NATIONAL SECURITY
SCREEN
INDUSTRY

THE UNIVERSITY
OF QUEENSLAND
AUSTRALIA

dvcs | Domestic Violence
Crisis Service